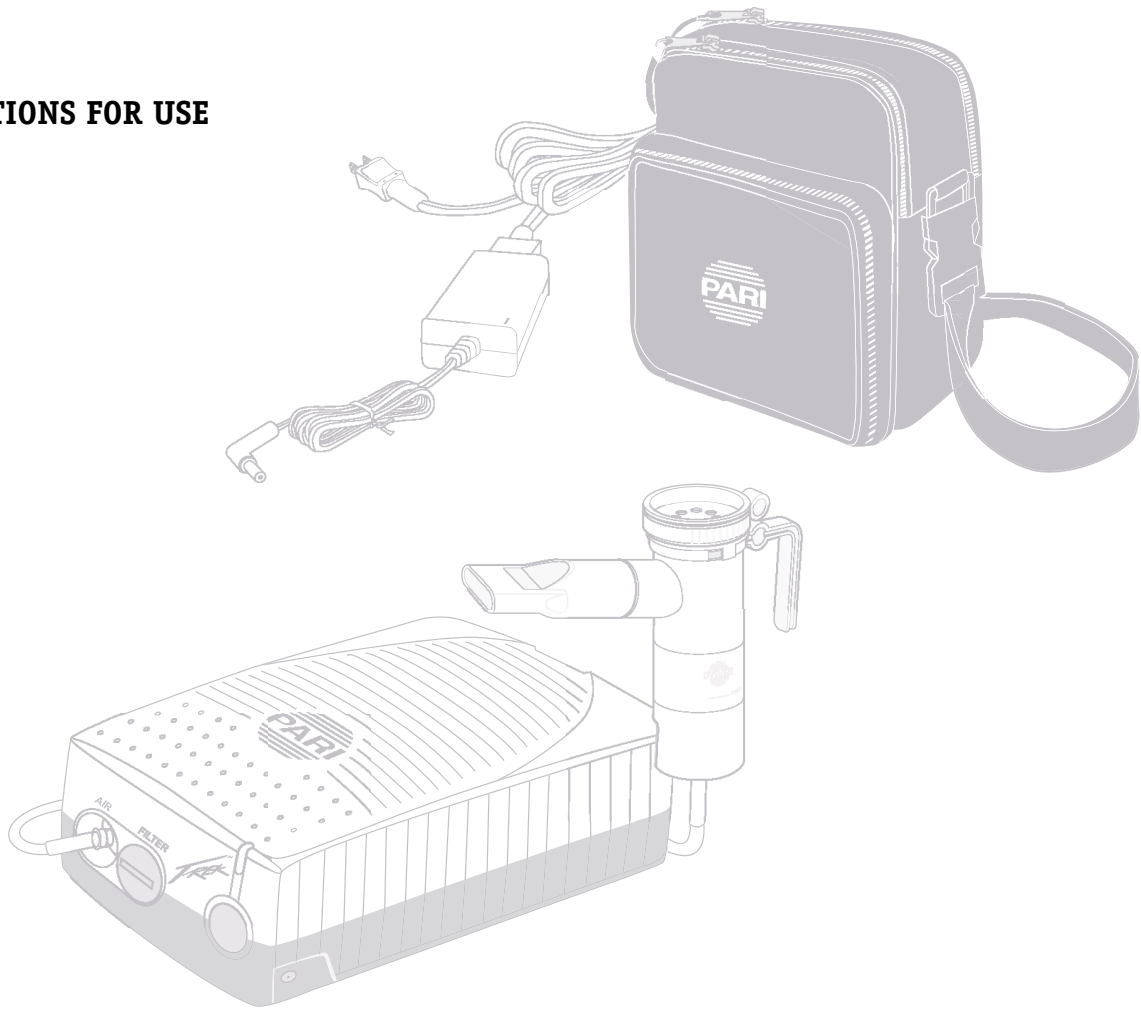


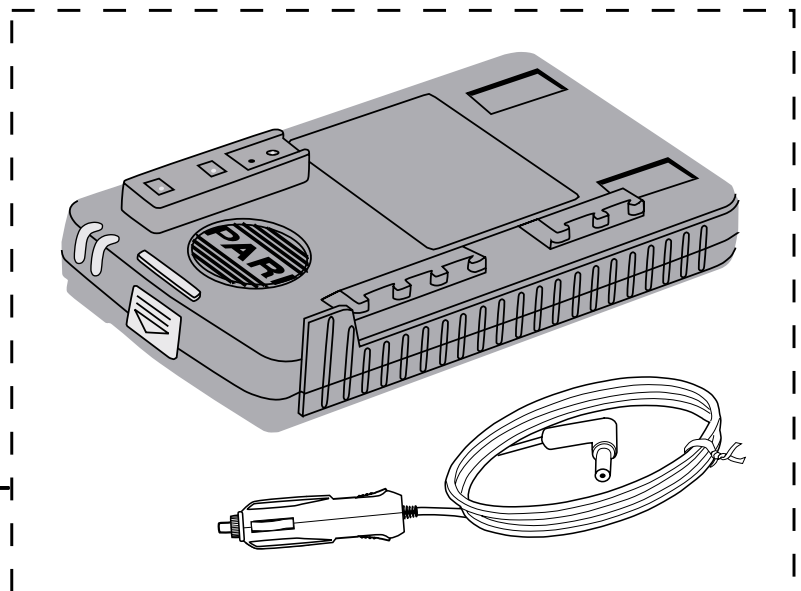
# PARI TREK™

PORTABLE POWER KIT

## INSTRUCTIONS FOR USE



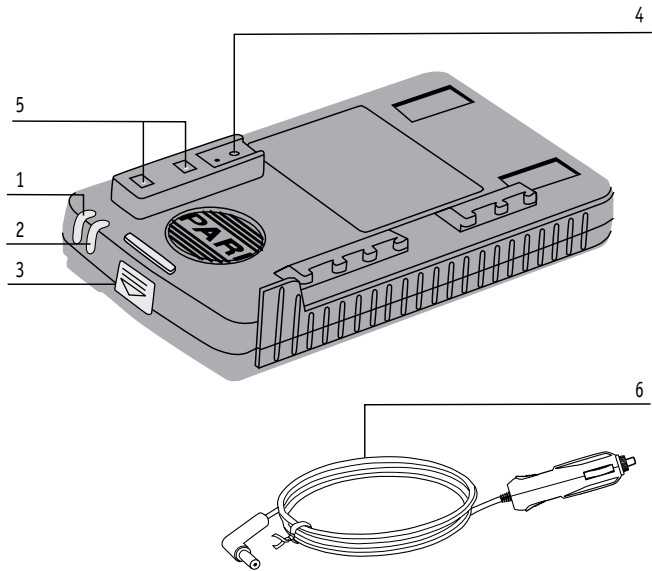
## RECHARGEABLE BATTERY AND 12V DC ADAPTER



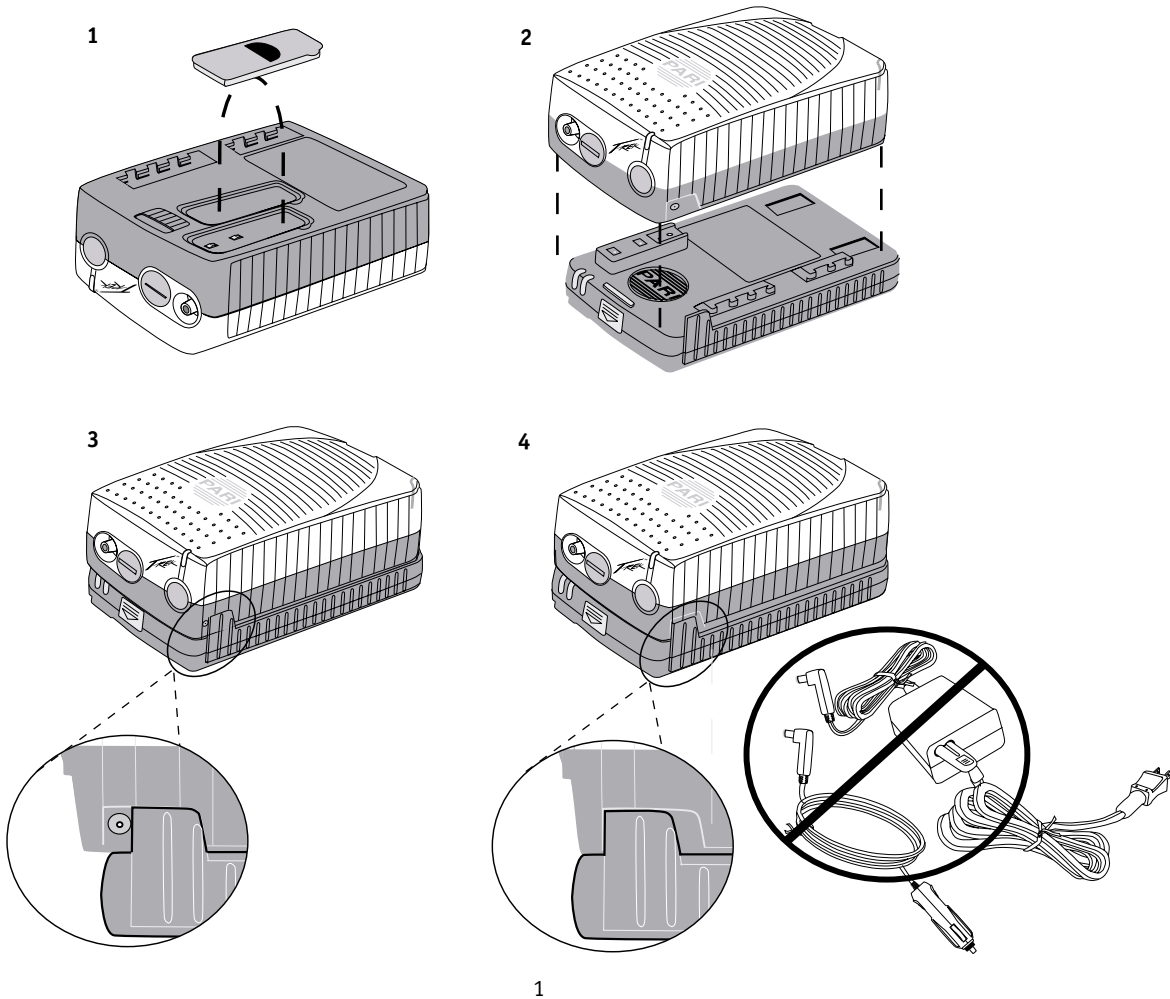
**FIGURE A**

**PARI TREK PORTABLE POWER KIT  
(RECHARGEABLE BATTERY AND 12V DC ADAPTER)**

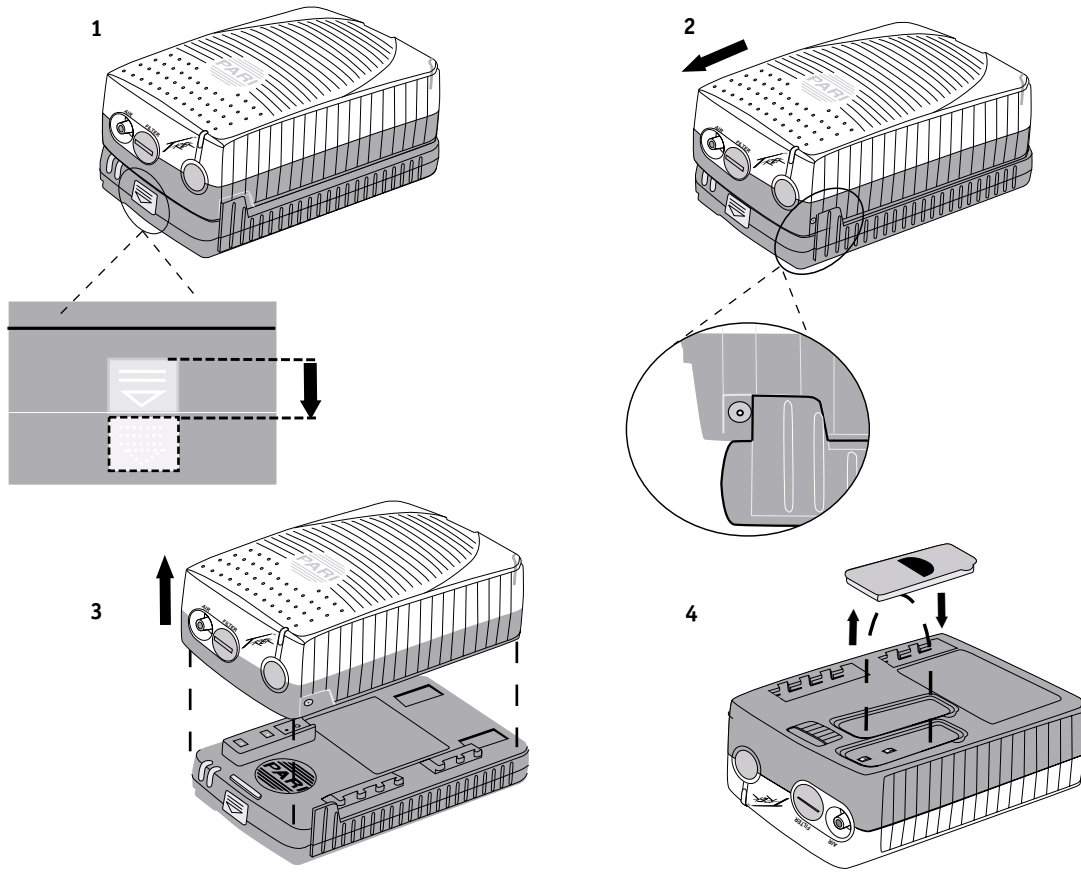
- 1 Charge Indicator
- 2 Battery Level Indicator
- 3 Release Button
- 4 Charge Receptacle
- 5 Battery Contacts
- 6 12V DC Adapter



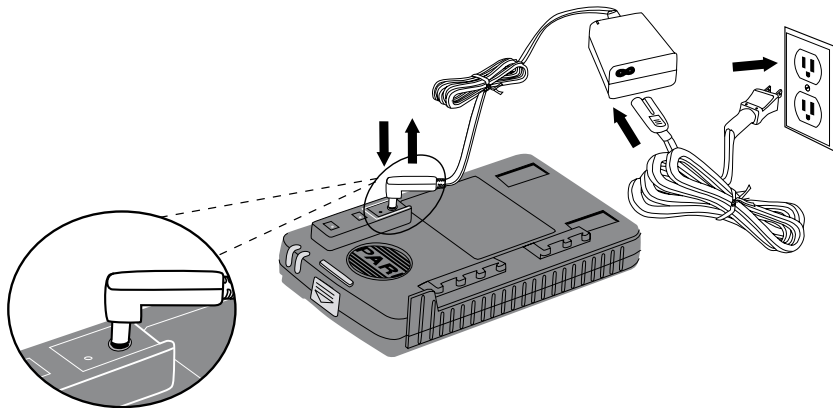
**FIGURE B**



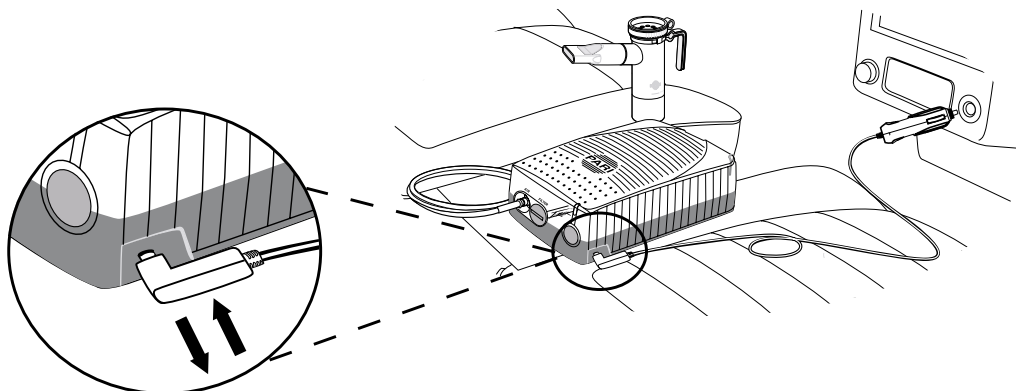
**FIGURE C**



**FIGURE D**



**FIGURE E**



## ENGLISH

This sheet complements the **Instructions For Use** of the PARI TREK Compressor Nebulizer System. It explains the use of the Rechargeable Battery and 12V DC Adapter. For proper use of the nebulizer, follow the instructions found in the PARI TREK Compressor Nebulizer System **Instructions For Use**.

\*Please refer to the fold-out pages for figures referenced in this manual.

**A LARGER TEXT VERSION OF THESE INSTRUCTIONS FOR USE IS AVAILABLE FOR VISUALLY IMPAIRED PATIENTS FREE OF CHARGE AT [WWW.PARI.COM/PRODUCTSUPPORT/INSTRUCTIONS.HTML](http://WWW.PARI.COM/PRODUCTSUPPORT/INSTRUCTIONS.HTML)**

### RECHARGEABLE BATTERY

The PARI TREK Rechargeable Battery requires a few precautions to ensure proper operation and to avoid damage. When used correctly the battery can operate the nebulizer for approximately 60 minutes (battery operation may vary due to charge conditions and care) and can be recharged approximately 250 cycles. When the orange and green indicators (refer to figure A items 1 and 2) blink alternately the Rechargeable Battery has reached the end of its useful life and must be replaced with a new PARI TREK Rechargeable Battery.

#### WARNING

1. Use only the PARI TREK Rechargeable Battery described in these **Instructions For Use** for operating your PARI TREK Compressor .
2. Do not immerse the PARI TREK Rechargeable Battery in water.
3. Do not touch the battery with wet or moist hands.
4. Do not expose battery to direct sunlight, humidity, extreme temperatures or chemicals.
5. Make sure battery poles do not come into contact with keys or other metal objects, causing a "short circuit".
6. Battery is protected from overheating. Battery may not operate if temperature is 104°F (40°C) or higher. Allow battery to cool before restarting.
7. To charge the PARI TREK Rechargeable Battery use only the PARI TREK Multi-Voltage AC Adapter (part number 46F0002) or 12V DC Adapter. Using other adapters may damage the battery.
8. In case of failure in charging or operating, unplug the Rechargeable Battery from the Multi-Voltage AC Adapter and turn the unit off. Should the Rechargeable Battery fail to charge or operate improperly, even if the Instructions For Use are followed, notify the authorized service center by calling PARI Patient Connection toll free (USA) at 1.877.943.3931, then press 1.
9. Do not attempt to open the plastic case or to replace any components. Do not disassemble Rechargeable Battery. The Rechargeable Battery is a sealed unit and can not be repaired.
10. Protect the environment: when replacing the Rechargeable Battery, recycle old battery or dispose of properly in accordance with local laws.
11. Do not incinerate (burn).

### SAFETY PRECAUTIONS

#### IMPORTANT SAFEGUARDS

**READ ALL WARNINGS BEFORE USING YOUR PARI TREK RECHARGEABLE BATTERY AND 12V DC ADAPTER**

### SAFETY PRECAUTIONS

#### DANGER

To reduce the risk of serious or fatal injury from electrocution:

1. Do not place or store the product where it can fall or be knocked into bathtub, sink, water, or other liquid. Do not place or drop into water or other liquid. Do not use while bathing.
2. Do not reach for a product that has fallen into water or other liquid. Unplug immediately.
3. Always unplug immediately after using.

#### WARNING

To reduce the risk of serious or fatal injury from electrocution, fire, burns and to reduce the risk of damage and malfunction of the unit:

1. Before use, check the serial number label on the bottom of the battery and on the Multi-Voltage AC Adapter to ensure that the voltage and current indicated on the unit correspond with the voltage and current available.
2. Never operate this product if it:
  - has a damaged cord or plug,
  - is not working properly,
  - has been dropped or damaged,
  - has been exposed to any liquids inside the case.

- Return non-operating product to an authorized PARI Service Center for examination, repair or replacement.
3. Keep all electrical cords away from heated surfaces. Do not overload wall outlets or use extension cords.
  4. Never drop or insert any object into any openings.
  5. Be sure the PARI TREK BATTERY and the Multi-Voltage AC Adapter are unplugged prior to cleaning.
  6. Never spray liquids onto the compressor housing or battery. Fluid could cause damage to the electrical and compressor parts and could lead to a malfunction. In the event that fluids enter the unit, return the product to an authorized PARI Service Center for examination and repair.
  7. Do not use the PARI TREK Compressor or the PARI Reusable Nebulizer while operating a vehicle.

#### **BEFORE USING RECHARGEABLE BATTERY FOR THE FIRST TIME READ CAREFULLY AND FOLLOW INSTRUCTIONS**

1. Completely charge the battery before using for the first time. Refer to **Charging the Battery** section below.
2. The Rechargeable Battery can not be connected to the PARI TREK Compressor if either the Multi-Voltage AC Adapter or 12V DC Adapter are plugged into Power Receptacle. Refer to figure D.
3. To uncover the Battery Connection, remove the blue Removable Connection Cover from the bottom of the compressor. Place it into the storage area provided. Refer to figure B.
4. Set the blue Removable Connection Cover into the storage area provided in the bottom of the PARI TREK Compressor.
5. Attach the PARI TREK Compressor to the Rechargeable Battery by placing it on top of the battery and sliding it into place. Refer to figure B. There will be an audible click once the battery is locked into place. Ensure battery is securely locked onto the compressor before use.
6. The Multi-Color Status Indicator on the PARI TREK Compressor will illuminate green when the compressor is operating.
7. Use the Battery Charge Indicator light to determine the condition of the Battery:

- GREEN – Battery is plugged into the wall outlet and is fully charged.
- ORANGE – When blinking, Battery must be recharged. Use other power source using Multi-Voltage AC Adapter or 12V DC Adapter.

When the battery is completely discharged all indicators on the battery and compressor will extinguish and the compressor will shut off. Refer to **Charging the Battery** section below.

8. To remove the Battery from the PARI TREK Compressor, push and hold the Release Button down on the front of the Battery then slide the Battery forward and lift the compressor off the Battery. Refer to figure C.
9. To protect the Battery Connection from possible damage, attach the blue Removable Connection Cover to the bottom of the PARI TREK Compressor. Refer to figure B.
10. The Rechargeable Battery can not be recharged while it is attached to the PARI TREK Compressor. Refer to figure D.

#### **CHARGING THE BATTERY**

1. The PARI TREK Battery must be charged for 16 hours before using it the first time, even if the Battery Level Indicator is illuminating green. Refer to figure A item 2.
2. To charge the Battery, plug the Multi-Voltage AC Adapter into the wall outlet. Plug the other end of the Multi-Voltage AC Adapter into the Charge Receptacle on the top of the Rechargeable Battery. Refer to figure D. The Charge Indicator will illuminate orange indicating the Battery is charging.
3. When the Rechargeable Battery is fully charged, the Charge Indicator on the Battery will illuminate green. Unplug the Multi-Voltage AC Adapter from the Charge Receptacle on the top of the Rechargeable Battery. The amount of time it takes to recharge the Battery will depend on the age and charge level of the Battery.

NOTE: Do not leave the Multi-Voltage AC Adapter plugged into the Rechargeable Battery for more than 24 hours. The Rechargeable Battery electrically disconnects from the Multi-Voltage AC Adapter after 16 hours of charging. If left plugged in for extended periods of time, the Rechargeable Battery will slowly discharge.

4. For maximum battery performance, the Battery should be periodically charged and discharged through several cycles. In time, the battery capacity will decrease and the number of treatments per charge will be reduced.
5. When not in use, the Rechargeable Battery should be charged overnight every 1-2 months to optimize and preserve the life of the Rechargeable Battery.
6. Normal battery life is approximately 250 charge cycles. When the orange and green indicators blink alternately, the Battery has reached the end of its useful life (approximately 250 cycles) and must be replaced with a new PARI TREK Battery.

#### **STORING THE RECHARGEABLE BATTERY**

1. The Battery should be stored FULLY CHARGED in a cool dry place.
2. Every 1-2 months, charge and discharge the Rechargeable Battery to maintain the maximum battery capacity.
3. It may take up to 5 charge/discharge cycles to return the Battery to maximum capacity after long term storage.

NOTE: If the Battery goes for a long period of time without charging, Battery damage may occur.

#### **CLEANING THE RECHARGEABLE BATTERY**

Use a clean, dry cloth to wipe the exterior of battery. Be careful not to get liquids onto the Charge Receptacle or the Battery Contacts since damage could occur.

**SPECIFICATIONS:**

Operating time with battery: . . . . .Approximately 60 minutes  
Number of treatments per charge: . . . Up to 8 treatments when nebulizing 2.5ml of medication using a PARI Reusable Nebulizer  
Normal time to charge: . . . . .Approximately 5 Hours

**OPERATION USING 12V DC ADAPTER:**

NOTE: Do not use the PARI TREK Compressor or the PARI Reusable Nebulizer while operating a vehicle.

- 1. Plug the 12V DC Adapter into the vehicle outlet and plug the other end of the adapter into the Power Receptacle on the side of the PARI TREK Compressor. Refer to figure E.

NOTE: Best results will be achieved when the car engine is running.

- 2. The Multi-Color Status Indicator on the PARI TREK Compressor will illuminate green when the compressor is operating.

**PARI TREK COMPRESSOR LIMITED WARRANTY**

PARI warrants the PARI TREK Rechargeable Battery and 12V DC Adapter will be free from defects in workmanship and materials for a period of six (6) months. This warranty does not extend to failures resulting from accident, misuse, abuse, alteration, use of unauthorized service, parts, or failure to comply with **Instructions For Use**.

If the warranted equipment should fail during the warranty period, PARI, at its option, will repair or replace parts at issue, provided the claim is bona fide. It shall be the responsibility of the purchaser to pack and return the equipment in a manner to avoid shipping damage. The shipment must be prepaid to PARI Respiratory Equipment, Inc. This warranty covers the cost of labor incurred in the removal or replacement of the warranted component parts at authorized PARI Service Centers only. To make a claim under this warranty, notify the authorized service center by calling PARI Patient Connection toll free at 1.877.943.3931 USA, then press 1.

THERE ARE NO OTHER EXPRESS WARRANTIES. ALL IMPLIED WARRANTIES ON THE PARI TREK AND ITS PARTS, INCLUDING IMPLIED WARRANTIES OF MERCHANTABILITY AND FITNESS FOR A PARTICULAR PURPOSE, ARE LIMITED TO THIRTY-SIX MONTHS FROM THE DATE OF FIRST RETAIL PURCHASE. ALL EXPRESS OR IMPLIED WARRANTIES ON ANY OTHER PARTS, INCLUDING THE IMPLIED WARRANTIES ON ANY OTHER PARTS OF MERCHANTABILITY AND FITNESS FOR A PARTICULAR PURPOSE, ARE DISCLAIMED. Some states do not allow limitation on how long an implied warranty lasts, so the above limitations may not apply to you.

The sole and exclusive remedy under this warranty is to repair or replace the PARI TREK and/or its parts at the option of PARI. IN NO EVENT SHALL PARI BE LIABLE FOR INCIDENTAL OR CONSEQUENTIAL DAMAGES TO THE PURCHASER OR ANY THIRD PARTY, INCLUDING WITHOUT LIMITATION, DAMAGES ARISING FROM LOST PROFITS, LOSS OF BUSINESS OPPORTUNITY, LOSS OF PROPERTY, ECONOMIC LOSSES, OR STATUTORY OR EXEMPLARY DAMAGES WHETHER IN NEGLIGENCE, WARRANTY, STRICT LIABILITY OR OTHERWISE. Some states do not allow the exclusion of incidental or consequential damages, so the above limitations or exclusions may not apply to you. This warranty gives you specific rights. You may also have other rights, which vary State to State.

**SERVICE AND REPAIR**

If you should have any questions about your PARI TREK Portable Power Kit:

- 1. Please contact PARI Patient Connection toll free at 1.877.943.3931 (USA), then press 1 for the authorized service center.
- 2. In writing, describe the malfunction or symptoms of the PARI TREK Portable Power Kit. Include your full name, address, and daytime telephone number.
- 3. Send the written description and the PARI TREK Portable Power Kit in a protective box to the address provided by PARI Patient Connection.

46D0003 9/02



*Specialists in effective inhalation*

PARI RESPIRATORY EQUIPMENT, INC.  
3 Justin Court, Monterey, California 93940  
Toll Free (USA) 1.877.943.3931 Fax 1.800.727.4112

www.PARI.com  
E-mail ProductInfo@PARI.com  
Respiratory CEU programs available  
© 2002 PARI Respiratory Equipment, Inc.

