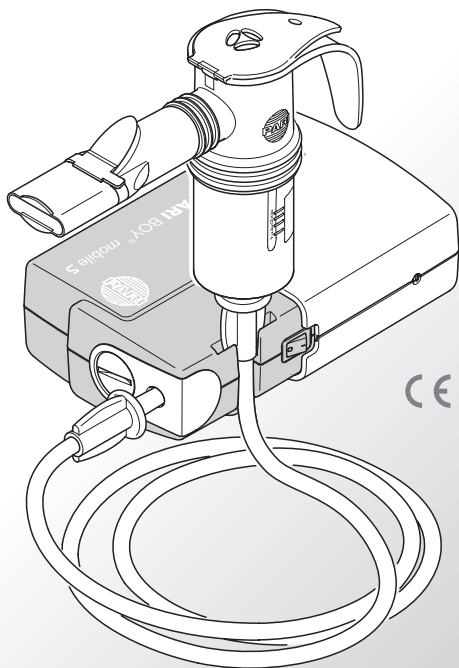
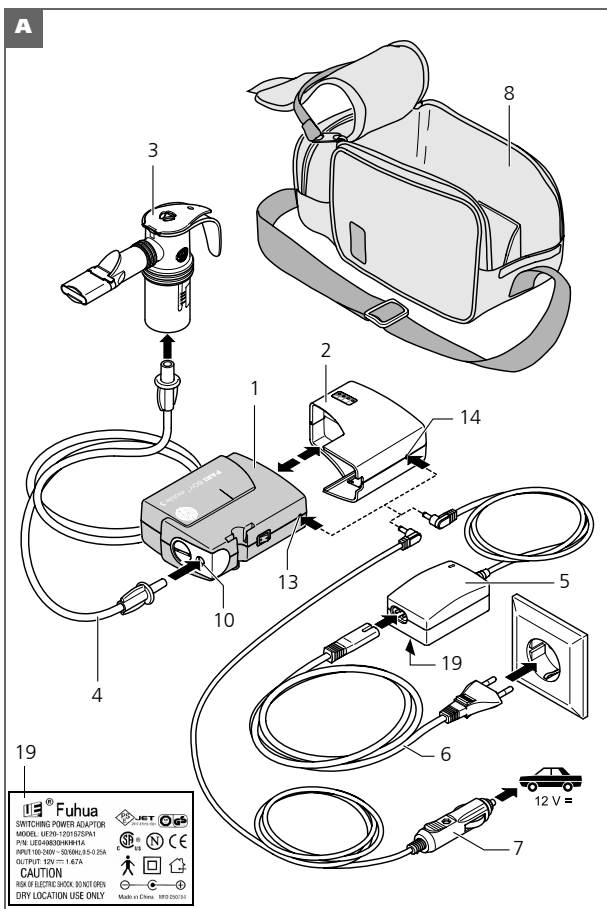




BOY® *mobile S*



CE 0123

**A**

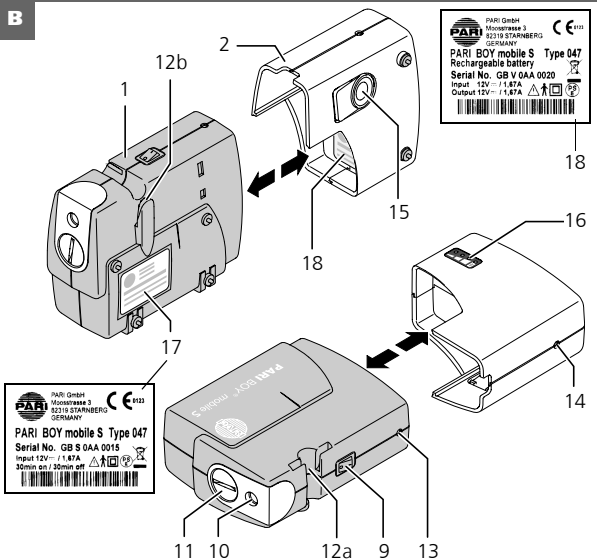
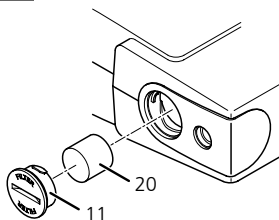
19

 **Fuhua**  
 SWITCHING POWER ADAPTOR  
 MODEL: UE20-1201S7SPK1  
 P/N: UE040830RRR4TA  
 INPUT: 100-240V ~ 50/60Hz/0.35-0.25A  
 OUTPUT: 12V  $\bar{\bar{}}$  1.67A  
**CAUTION**  
 RISK OF ELECTRIC SHOCK. DO NOT OPEN.  
 DRY LOCATION USE ONLY



Made in China 197220174

12V  $\bar{\bar{}}$

**B****C****D**

# Instructions for use



Read these instructions for use before using for the first time.  
Keep these instructions for use in a safe place.

## Table of contents

<b>1</b>	<b>Components</b> .....	<b>16</b>
<b>2</b>	<b>Working parts</b> .....	<b>16</b>
<b>3</b>	<b>Important notes</b> .....	<b>17</b>
<b>4</b>	<b>Intended use</b> .....	<b>19</b>
<b>5</b>	<b>Preparation for use</b> .....	<b>20</b>
5.1	Operation with the rechargeable battery .....	20
5.2	Operating with 12 V DC socket .....	22
5.3	Mains power operation .....	23
5.4	Connecting the PARI nebuliser .....	23
<b>6</b>	<b>Cleaning</b> .....	<b>24</b>
<b>7</b>	<b>Filter change</b> .....	<b>24</b>
<b>8</b>	<b>Disposal</b> .....	<b>25</b>
<b>9</b>	<b>Technical data</b> .....	<b>25</b>
<b>10</b>	<b>Shipping and storage</b> .....	<b>26</b>
<b>11</b>	<b>Terms and conditions of warranty</b> .....	<b>27</b>
<b>12</b>	<b>Explanation of symbols</b> .....	<b>28</b>

## 1 Components

Please check that your PARI BOY mobile S compressor contains all the following components (see image **A**):

(1) PARI BOY mobile S compressor	(5) Power adapter
(2) Rechargeable battery	(6) Power cord
(3) PARI nebuliser with mouthpiece <sup>a)</sup>	(7) 12V DC socket
(4) Connection tubing	(8) Carrying case

a) For a list of components included in the accompanying nebuliser Kit, see the instructions for use of the nebuliser.

## 2 Working parts

The PARI BOY mobile S compressor includes the following working parts (see image **B**):

(9) On/Off switch	(15) Release button for rechargeable battery
(10) Air outlet	
(11) Filter holder	(16) Charging status display
(12a) Holder for nebuliser	(17) Compressor label
(12b)	(18) Rechargeable battery label
(13) Compressor power cord socket	(19) Power adapter label (image <b>A</b> )
(14) Rechargeable battery power cord socket	(20) Filter (image <b>D</b> )

### 3 Important notes

The PARI BOY mobile S compressor is an electrically operated appliance. It may not be operated unattended, or in areas at risk of explosion or in damp locations.

Whenever the appliance is used, a thorough knowledge of the instructions for use and compliance with the same is assumed. In all cases the operator is liable for the safe operation of the appliance if it is not used according to the instructions.

The appliance may only be serviced by PARI GmbH or a service center expressly authorised by PARI GmbH. If repairs are carried out by an authorised PARI GmbH service center, you must ask for a certificate giving the date, type and scope of the repair and the company name and signature. Only original PARI accessories may be used to operate the appliance.

Please remove the power plug from the socket to ensure that the power is completely cut off.



#### **Safety instructions:**

- If the device or the power cord is damaged, or if a fault is suspected after the device has been dropped or suffered a similar shock, the system (compressor and rechargeable battery) must not be operated and/or the power plug must be disconnected immediately.
- The power plug must be disconnected
  - if a malfunction occurs during operation
  - before cleaning and maintaining the appliance
  - after each use
- Do not pull the power plug out of the socket with wet hands; never pull on the power cord to disconnect the plug.
- Do not run the power cord over sharp edges or allow it to be pinched; do not let it hang unsupported and do not expose it to excessive heat or oil.
- Do not attempt to operate the PARI BOY mobile S compressor with any power source other than the original PARI BOY mobile S rechargeable battery.
- To ensure perfect functioning, do not expose the rechargeable battery to direct sunlight, moisture, extremes of temperature or strong chemicals.



- Ensure that the contacts on the rechargeable battery do not come into contact with electrically conductive metal (e.g. keys). This can cause a short circuit.
- The appliance and the rechargeable battery are protected against overheating. However, the battery should not be operated in ambient temperatures above 40°C. The appliance and the rechargeable battery must be allowed to cool down after overheating. The PARI BOY mobile S compressor must not be operated for longer than 30 minutes at one time. After this time, it must be turned off and should not be switched on again for another 30 minutes.
- Use only the accompanying power adapter or the 12 V DC socket (e.g. car cigarette lighter) to charge the rechargeable battery. The battery may be damaged if products from other manufacturers are used.

PARI GmbH is not responsible for damage or malfunctions caused by the operator using the machine improperly or contrary to the instructions.

## 4 Intended use

When used in conjunction with a PARI nebuliser, the PARI BOY mobile S compressor forms a highly effective device for inhalation treatment of the upper and lower respiratory tracts with nebulised medications. It is suitable for temporary<sup>1)</sup> oral or nasal inhalation of liquid medication prescribed or recommended by a doctor for the inhalation treatment of the lower and upper respiratory tracts.

The PARI BOY mobile S compressor must only be used with PARI nebulisers (except the PARI LC PLUS UNIVERSAL) and the correct PARI accessories. Using nebulisers and accessories made by other manufacturers can cause the inhalation device to be used improperly, which will impair the efficiency of the treatment because the PARI compressor and the PARI nebuliser are designed to complement each other.



You must always have a medical examination before treating illnesses.  
You must only use medication that has been prescribed or recommended by your doctor.

---

1) Each application less than 1 hour, according to European Medical Device Directive 93/42/EEC, in this case max. 20 minutes.

## 5 Preparation for use

The PARI BOY mobile S can be operated using the rechargeable battery, a 12V DC socket (e.g. car cigarette lighter), or a mains power supply. For maximum mobility, the PARI BOY mobile S can be used in the accompanying carrying case (see image **C**). You can see the charge level of the battery through the window in the case.

### 5.1 Operation with the rechargeable battery



#### Notes on the rechargeable battery:

- Upon delivery, the battery is charged to about 40%. It must be fully charged before the appliance is used for the first time (see chapter 5.1.1).
- The charging time depends on the age and residual capacity of the battery, it takes about 2 hours to charge fully.
- At maximum charge, the new rechargeable battery has a capacity of about 50 minutes. This is sufficient for about 8-10 inhalation treatments with a medication quantity of 2.5 ml.
- To ensure that the charge is retained for as long as possible, store the charged battery at room temperature (approx. 21°C). If the battery is not going to be used for a long period, it must be charged again after 6 months because otherwise it could be damaged by deep depletion.
- Do not place the battery behind the windscreen of your car, and do not expose it to temperatures over 45°C.

see image **B**:

- Place the rechargeable battery (2) on the compressor (1). Press the two components together as far as they will go, i.e. until the engaging hook on the release button (15) engages in the bottom of the battery.
- Connect the PARI nebuliser to the compressor as described in chapter 5.4.

To release the battery, press the release button and pull the battery away from the compressor.

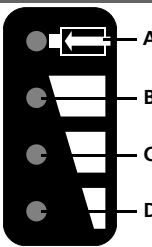
### 5.1.1 Charging the rechargeable battery

see image **A**:

- Connect the power adapter (5) to the power cord (6).
- Connect the power adapter to the power cord socket (14) on the rechargeable battery and then plug it into a suitable socket.
- LED **A** lights up, meaning that the battery is charging. As soon as the battery is fully charged, LED **A** goes out.
- Disconnect the power adapter from the battery.

### 5.1.2 Explanations of the battery LEDs

The battery's charging capacity is indicated by a corresponding combination of the battery LEDs:

	LED <b>A</b> - Charging process display	
	No LEDs lit	The battery is fully charged.
	LEDs <b>A</b> , <b>B</b> , <b>C</b> and <b>D</b> lit	Battery is charging.
	LEDs <b>B</b> , <b>C</b> and <b>D</b> lit	100% to 75% battery capacity
	LEDs <b>C</b> and <b>D</b> lit	75% to 50% battery capacity
	LED <b>D</b> lit	50% to 25% battery capacity
	LED <b>D</b> flashing	<25% battery capacity The appliance can continue running for about 10 minutes, i.e. the battery must soon be recharged.



**LEDs A, B, C and D flashing:** There is a fault in the battery.

To reset a possible temporary fault, proceed as follows:

#### *Operating with the rechargeable battery*

- Switch the compressor (1) off.
- Connect the rechargeable battery (2) to the power adapter (5) and plug the power plug into the socket.
- Switch the compressor on.

If the LEDs continue to flash, there is a fault in the battery and it must be sent to PARI GmbH.

### *operating on mains power, with rechargeable battery plugged in*

- Switch the compressor (1) off.
- Disconnect the power cord (6) from the battery (2).
- Reconnect the power cord to the battery.
- Switch the compressor on again.

If the LEDs continue to flash, there is a fault in the battery and it must be sent to PARI GmbH.



**Note:** All four LEDs light up briefly when the power adapter is plugged in. This is merely a function check.

---

## **5.2 Operating with 12 V DC socket**

see image **A**:

- Connect the 12 V DC socket (7) and the power cord socket (13).  
*Alternatively: operation with 12 V DC socket with rechargeable battery plugged in:*  
Connect the 12 V DC socket and the power cord socket (14) on the rechargeable battery.
- Connect the 12V DC socket to a suitable 12 V socket.
- Connect the PARI nebuliser to the compressor (see description in chapter 5.4)



**Note:** If the compressor is switched off but still connected to the 12 V socket, the rechargeable battery is charged automatically.

### 5.3 Mains power operation

see image **A**:

- Connect the power adapter (5) to the power cord (6).
- Connect the power adapter to the power cord socket (13) on the compressor and then plug it into a suitable socket.

*Alternatively: operation on mains power with rechargeable battery plugged in:*

Plug the power adapter into the power cord socket (14) on the rechargeable battery.

- Connect the PARI nebuliser to the compressor (see description in chapter 5.4).



**Note:** If the compressor is switched off but still connected to a socket, the rechargeable battery is charged automatically.

### 5.4 Connecting the PARI nebuliser

see image **A**:

- Insert the connection tubing (4) with a slight twist into the air outlet (10) on the compressor.  
Attach the other end to the PARI nebuliser (3).
- Ensure that the air outlets are firmly fixed onto the compressor and the nebuliser.

**Please read the instructions for use of the nebuliser carefully and thoroughly and use the nebuliser accordingly.**



**Caution:** In order to avoid any risk to health (e.g. an infection), please also read the "Hygienic Re-use" chapter in the instructions for use of the PARI nebuliser you are using.

It is also important that you observe the subsequent instructions on "Cleaning" and "Filter Change" in these instructions for use.

## 6 Cleaning



**Warning:** Before cleaning, turn the compressor off and remove the power cord from the socket.

- Wipe the outer surface of your PARI BOY mobile S compressor housing with a damp cloth.

If liquid gets into the compressor, please contact an authorised dealer or the PARI Service Center (Tel.:+49-(0)8151-279 220 or info@pari.de). Only reuse your PARI BOY mobile S compressor on their instructions or once a check and any necessary repairs have been carried out by your authorised dealer or the technical Service Dept. of PARI GmbH.

## 7 Filter change

The filter on the front plate of your PARI BOY mobile S compressor must be replaced every 200 operating hours, and at least once a year, in normal operating conditions.

Also please check the filter at regular intervals (after every 10 to 12 inhalations). If it is dirty (grey or brown discolouration), clogged or damp, it must be replaced. Do not try to clean the filter and use it again.

Only use original PARI filters; otherwise your PARI compressor could be damaged or treatment may be inadequate.

To change the filter, proceed as follows (see image **D**):

- Unscrew the filter holder (11) from your PARI BOY mobile S counter clockwise using a suitable coin.
- Insert the filter holder with the new filter (20) into your PARI BOY mobile S and screw it in firmly turning it clockwise with a coin.

## 8 Disposal

This product falls within the scope of the European Council Directive on Waste Electrical and Electronic Equipment (WEEE<sup>1</sup>) and is included in product category 8: Medical devices for the purposes thereof. Accordingly, this product must not be disposed of with domestic waste. The disposal regulations prevailing in the respective member countries must be observed (e.g. disposal by local authorities or dealers). Materials recycling helps to reduce the consumption of raw materials and protect the environment.

## 9 Technical data

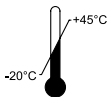
Electrical connection	
Power adapter (Model UE20-120167SPA1):	Input 100-240 V~ / 50/60Hz / 0.5-0.25 A
Appliance:	Input 12 V $\equiv$ / 1.67 A
Operating mode:	30 min on / 30 min off
Ambient temperature during operation:	10°C to 40°C
Max. noise vol. of the compressor:	49 dBA acc. to: EN 13544-1 section 26
Dimensions	
Housing dimensions (W x H x D):	without rechargeable battery: 8.9 cm x 4.5 cm x 11.3 cm with rechargeable battery: 8.9 cm x 4.5 cm x 14.8 cm
Weight:	without rechargeable battery: 360 g with rechargeable battery: 520 g
Rechargeable battery	
Capacity:	approx. 50 min. (when fully charged)
Charging time:	approx. 2 hours (for complete charging)
Input:	12 V $\equiv$ / 1.67 A
Output:	12 V $\equiv$ / 1.67 A

1) Directive 2002/96/EC of the EUROPEAN PARLIAMENT AND THE EUROPEAN COUNCIL of January 27, 2003 on waste electrical and electronic equipment.



- Portable and mobile high-frequency communication devices such as mobile phones can disrupt electrical medical equipment.
- The electrical field generated when the compressor is running can interfere with screens and monitors (flickering). For this reason, the compressor must be placed far enough away from screens/monitors to prevent such interference.
- Technical electromagnetic compatibility data is available in table form upon request from PARI GmbH, or on the Internet at [www.pari.de](http://www.pari.de), category "Products/Inhalation devices/Technical data".

## 10 Shipping and storage



Ambient temperature  $-20^{\circ}\text{C}$  to  $+45^{\circ}\text{C}$

**RH**  
10% - 95%

Relative humidity 10% to 95%

**P**  
500hPa-1060hPa

Atmospheric pressure 500hPa - 1060hPa

## 11 Terms and conditions of warranty

During the guarantee period, we or our customer service will repair any defects in the compressor resulting from faults in material or workmanship free of charge. The owner shall not be entitled to cancel the sale or demand a partial or full refund of the purchase price. This warranty does not cover damage caused by improper use of the appliance. The guarantee shall become void if repairs are undertaken on the appliance by unauthorised persons. No compensation will be paid for consequential or direct damage.

In the event of a claim under this guarantee, please bring the complete appliance to your dealer or send it to us, packed in the original box and postage paid, together with this certificate of guarantee.

Wearing parts are excluded from the guarantee.

The guarantee period shall commence on the date of purchase.

## 12 Explanation of symbols



- Caution, consult instructions for use
- Warning



On/Off



Direct current



Alternating current



Type B



Protection class II appliance



Charging process display



The medical device was distributed commercially after August 13, 2005. **This product must not be disposed of with normal domestic waste.** The symbol of the refuse bin with a line through it indicates that it must be collected separately.

We reserve the right to make technical changes.

For all product information please contact our Service Center:  
Tel.: +49-(0)8151-279 220

Information as at: January 2006

## **Garantieschein für PARI BOY mobile S**

Für den PARI BOY mobile S Kompressor gewähren wir 2 Jahre, für den mitgelieferten Akku 1 Jahr Garantie. Die Garantiefrist läuft ab Kaufdatum. Während der Garantiezeit beseitigen wir oder ein von uns autorisierter Kundendienst Fabrikations- und Materialfehler unentgeltlich. Schäden, die durch unsachgemäße Behandlung des Gerätes entstehen, fallen nicht unter die Garantie. Die Garantie erlischt bei Eingriffen am Gerät durch hierzu nicht befugte Stellen. Ein Anspruch auf Wandlung, Minderung oder Rücktritt besteht nicht. Ersatz eines mittelbaren oder unmittelbaren Schadens wird nicht gewährt. Verschleißteile sind von der Garantie ausgeschlossen.

Sollten Sie eine Reklamation haben, bringen Sie bitte das vollständige Gerät zu Ihrem Fachhändler oder schicken Sie es uns gut verpackt und frankiert mit diesem Garantieschein ein.

PARI GmbH - Technischer Service  
Holzhofstr. 10b  
82362 Weilheim, Germany

Kaufbestätigung: Das Gerät mit der obigen Gerätenummer wurde von uns original verpackt verkauft.

\_\_\_\_\_

Kaufdatum

\_\_\_\_\_

Stempel und Unterschrift des Fachhändlers



## Certificate of Guarantee for PARI BOY mobile S

Bar code label

**Geräte Nr.**  
**Appliance No.**

We grant a 2 year guarantee on the PARI BOY mobile S compressor and a 1 year guarantee on the supplied battery, commencing on the date of purchase. Within the guarantee period we or an authorised customer service point will repair, free of charge, any defects in the appliance resulting from faults in material or workmanship. Damage arising from improper use of the appliance is not covered by this guarantee. The guarantee shall become void if repairs are undertaken on the appliance by unauthorised persons. The owner shall not be entitled to cancel the sale or demand a partial or full refund of the purchase price. No compensation will be paid for consequential or direct damage. Wearing parts are excluded from the guarantee.

In the event of a claim under this guarantee, please bring the complete appliance to your dealer, well packed and postage paid, together with this certificate of guarantee.

Confirmation of purchase: The appliance with the above appliance number was sold in its original packaging.

\_\_\_\_\_

Purchase date

\_\_\_\_\_

Stamp and signature of the dealer



**Spezialisten für effektive Inhalation**



**PARI GmbH**

Moosstrasse 3 • 82319 Starnberg • Germany

Tel.: +49-(0)8151-279 0 • Fax: +49-(0)8151-279 101

E-Mail: info@pari.de • www.pari.de